

Using PDF Stamper for DocuShare

Overview of Operation

The DocuShare stamped PDF feature works by producing the requested stamped PDF (using the third party "Advanced command line PDF Stamper" tool), and storing the PDF as a new rendition of the original document. The steps are:

1. Administrator defines a stamp in the configuration file (PDFstamp.xml).
2. Author selects a defined stamp for their PDF using the "PDF stamp" document property.
3. Reader requests (by clicking on the document's title or download link) a PDF which is marked by the author for stamping.
4. PDF stamp function checks the document for a pre-existing stamped version of the PDF. If found and creation date is today and the stamp definition is not in development mode ("alwaysGenerate=true"), then redirect the browser to the pre-existing stamped PDF.
5. If found but not valid (stamp in development mode or not generated today), then delete the pre-existing stamped PDF and proceed to step 6 as if it never existed.
6. If stamped PDF not found, then create the stamped PDF (using the 3rd-party application) and store it as a new rendition to the original document. Redirect the browser to the newly-created stamped PDF.

Stamp Definition

Each stamp is defined by the Administrator in the XML-formatted configuration file "PDFstamp.xml". An example stamp definition is:

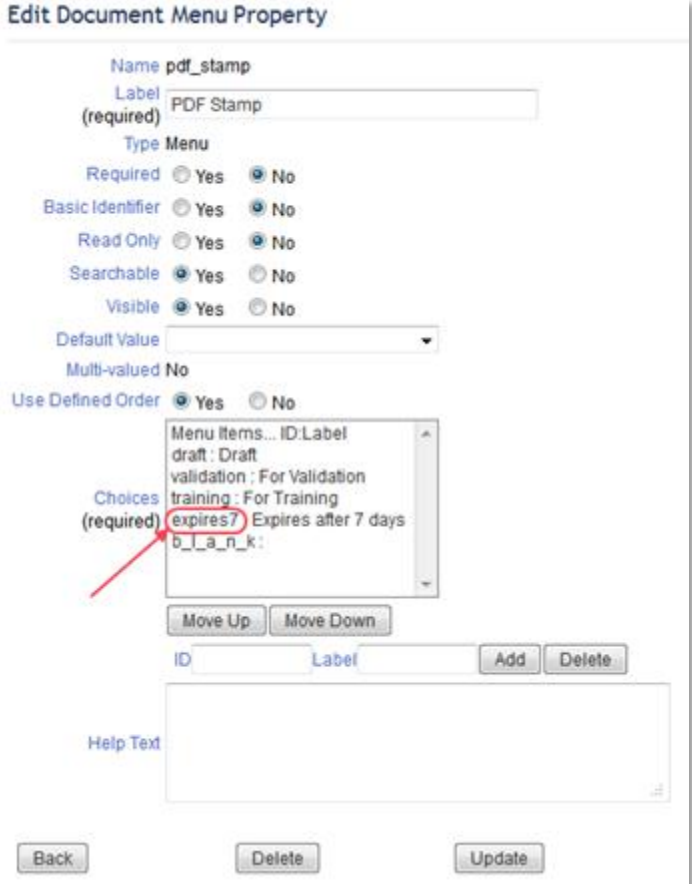
```
<stamp id="expires7">
  <alwaysGenerate>true</alwaysGenerate>
  <text>COPY EXPIRES: %date+7.MM/dd/yyyy%</text>
  <location>2</location>
  <font>
    <name>Castellar</name>
    <style>bold</style>
    <size>18</size>
    <color>-16777216</color>
  </font>
  <xpos>0</xpos>
  <ypos>0</ypos>
</stamp>
```

The stamp "id" is the internal name of the stamp. This value is used as the "id" portion of one value in the "PDF stamp" property's list of values (defined on the Document object page in the DocuShare Admin website).

The alwaysGenerate tag is the development mode flag. When true, pre-existing stamped renditions are always discarded and re-generated. This is useful when a stamp's definition is being tweaked. Once a stamp is "in production" this value should be set to false for efficiency and responsiveness.

The "text" is the text of the stamp itself. The "\n" inserts a newline (allowing for multi-line stamps). The special token "%date%" inserts today's date into the stamp. This date can be offset forward in time using a "+" value; for example "%date+7%" is seven days into the future. The date format can be controlled using a dot followed by Java [SimpleDateFormat](#) notation.

The "location" value indicates which of the 6 predefined locations to place the stamp text, or whether to not use the predefined locations and instead use absolute (X,Y)



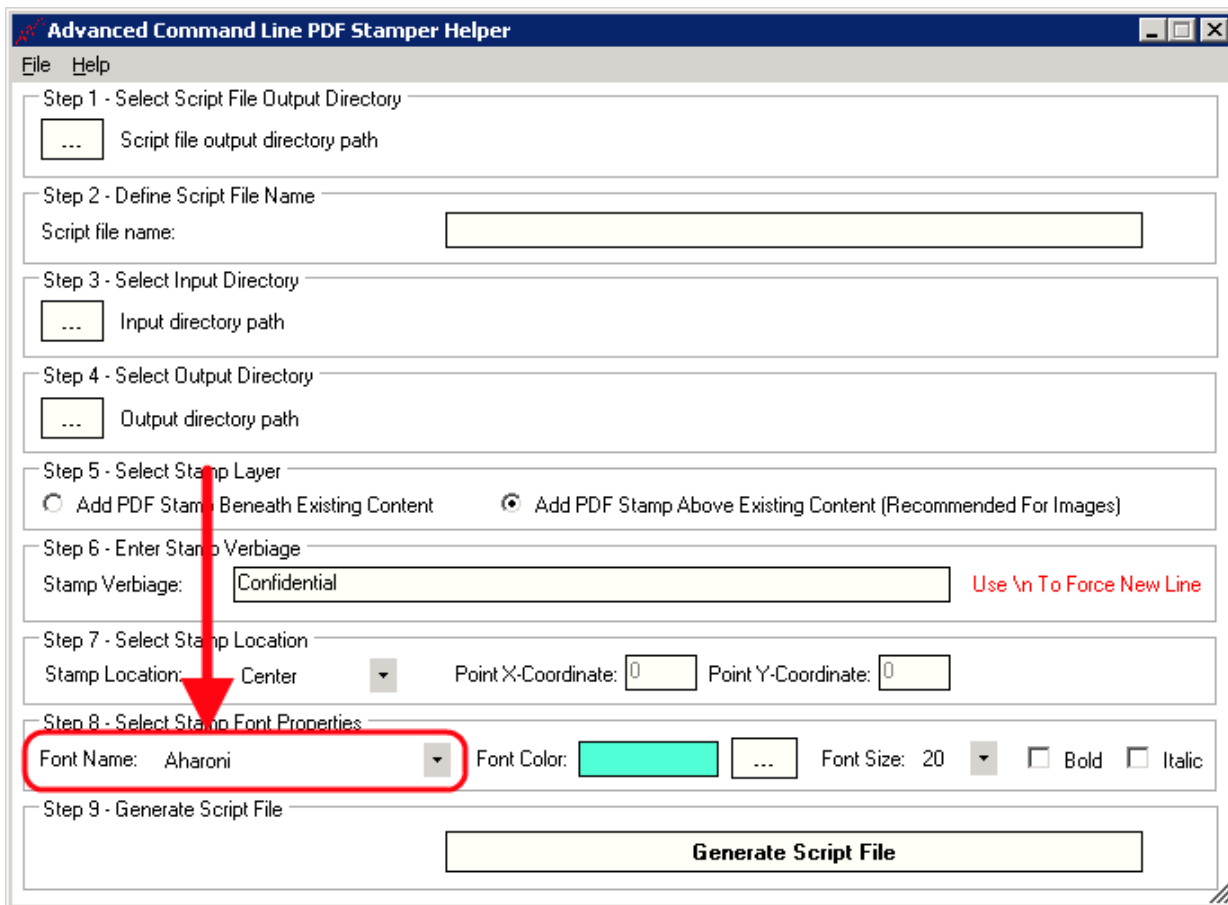
Using PDF Stamper for DocuShare

positioning. The possible values are:

- 1 Top Left of page
- 2 Top Center of page
- 3 Center of left edge of page
- 4 Center of page
- 5 Bottom Left of page
- 6 Bottom center of page
- 7 Use X-pos and Y-Pos

The "font" section defines the font face, style, size, and color for the stamp.

The font "name" is the font face to use. The list of possible font faces can be seen in the "Advanced Command Line PDF Stamper Helper" utility, which is installed with the "advanced command line PDF stamp" utility:



The font "style" can be blank (regular), "bold", "italic", or "bold italic".

The font "size" is the size in points.

The font "color" is the ARGB color value in decimal. ARGB colors are 4-byte values from 0 to 255; each byte corresponds to alpha (opacity), and red, green, and blue saturation. See this [Wikipedia article](#) for a thorough description of ARGB colors. Common color values are:

Decimal value	Hex value	Meaning
-16777216	FF000000	black
-65536	FFFF0000	opaque red
-16711936	FF00FF00	opaque green
-16776961	FF0000FF	opaque blue

Using PDF Stamper for DocuShare

Decimal value	Hex value	Meaning
2147418112	7FFF0000	50% transparent red
2130771712	7F00FF00	50% transparent green
2130706687	7F0000FF	50% transparent blue

Note: Color values must not have commas.

There are quite a few sites with useful tools for choosing RGB colors, you just have to add the leading hex value for opacity. Try these sites:

<http://www.colorpicker.com>

http://www.rapidtables.com/web/color/RGB_Color.htm

<http://www.allprofitallfree.com/color-wheel.html>

The "xpos" and "ypos" values are used when the "location" value is 7. They indicate where on the page to place the stamp. The units are points (1/72 of an inch), and the coordinate origin is the upper left-hand corner of the page. The indicated coordinate will be the upper left-hand corner of the stamp's text. Note: these values may only be non-negative integers.

Using "location" 7 with "xpos" and "ypos" values is necessary when you wish to position the stamp somewhere other than one of the 6 predefined locations (e.g. upper right-hand corner). Note that the xpos and ypos values are relative to the upper left-hand corner of the page, and therefore any given coordinate is likely to be correct only for a specific paper size. For example, an xpos/ypos coordinate for the lower right-hand corner of a standard letter- size page (8.5"x11") will place the stamp several inches above the bottom on a legal page (8.5"x14").